



SEMI-DETACHED HOUSE FOR SALE IN PALAFRUGELL WITH PRIVATE GARDEN

Palafrugell / Centro

Ref: P309

Price	480,000 €
Surface	267 m ²
Rooms	4
Bathrooms	2
Plot surface	410 m ²
E. certificate	In progress
Parking	2 spaces

- ✓ Heating
- ✓ Backyard
- ✓ Parking
- ✓ Views
- ✓ Storage

Wonderful semi-detached house of 267 m² built, located on a 410 m² plot. It features 4 bedrooms, two bathrooms, a garage for two cars, and a beautiful south-facing garden, perfect for enjoying the sun all year round. Additionally, it is just a few steps from the town center, making it very convenient.

The layout of the house is as follows: upon entering, a welcoming hallway connects to the main floor, which includes a fully equipped kitchen with access to the porch, a spacious and bright living-dining room with direct access to the garden, and a guest bathroom. The garage, with an automatic door, has space for two vehicles.

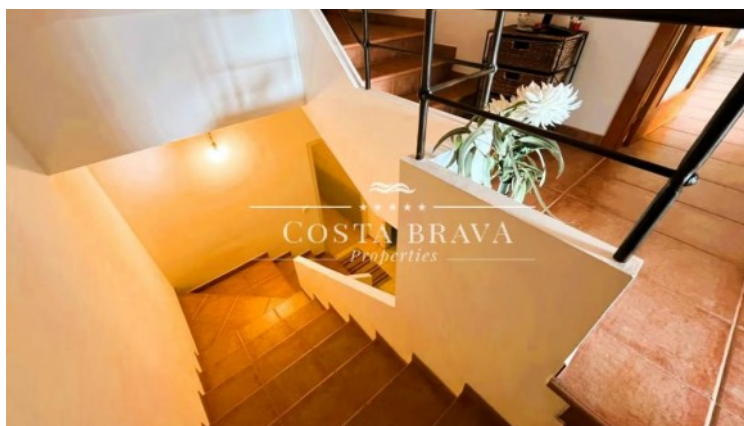
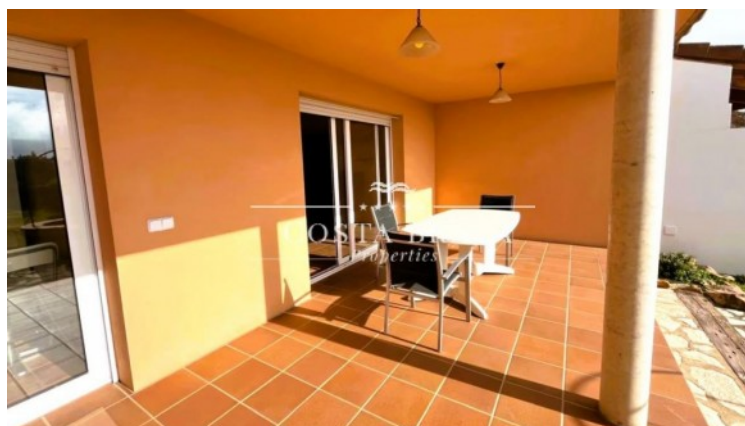
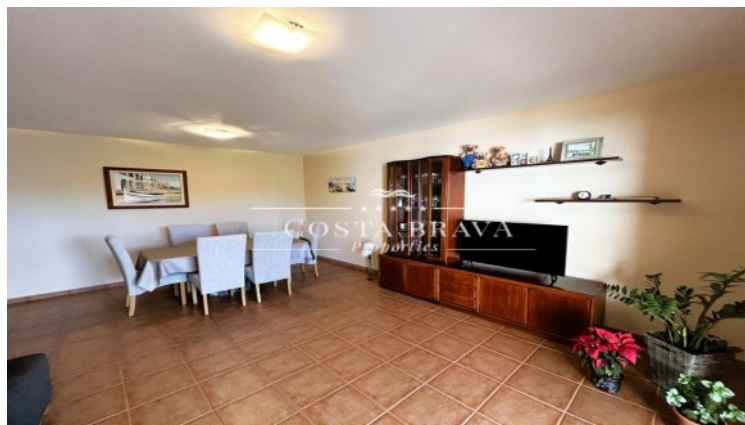
On the upper floor, you will find three double bedrooms, two of which have built-in wardrobes, and a single bedroom that can serve as an office or additional room. All bedrooms are exterior and have large windows that let in plenty of natural light. There is also a full and spacious bathroom on this floor.

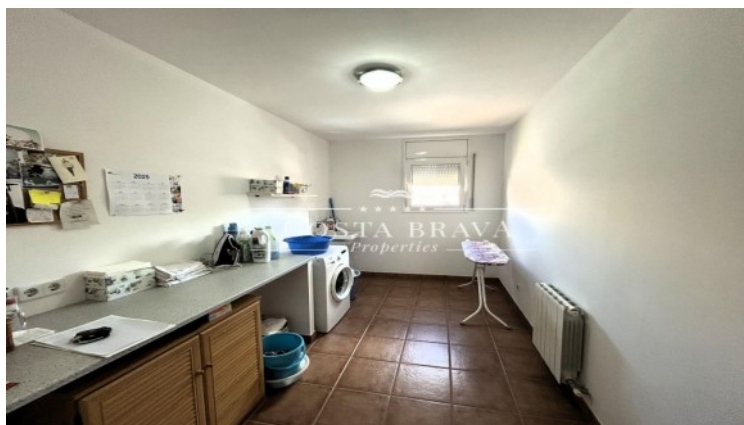
The basement includes two additional rooms, one double and one single, currently used as a workshop and storage room, but they can be adapted for other uses according to your needs.

The south-facing garden is an ideal space to enjoy the outdoors at any time of the day. It includes a porch that can be used as a summer dining area, and there is the possibility of building a swimming pool if desired.

The house is equipped with natural gas heating, aluminum windows with double glazing, and its own water well, adding functionality and comfort to the home.









Contact us for more information or to arrange a viewing

Tel: +34 636 979 378 / info@propertiescostabrava.com
+34 625 380 718

<https://www.propertiescostabrava.com>