



## VILLA EN VENTA EN PRESTIGIOSA URBANIZACIÓN CON VISTAS AL MAR

Begur / Casa de Campo

**Ref: BR112**

### Precio

**2,000,000 €**

Superficie	469 m <sup>2</sup>
Habitaciones	6
Baños	4
Superficie parcela	5,340 m <sup>2</sup>
C. energético	E
Aparcamiento	3 plazas

- ✓ Calefacción
- ✓ Vistas a la montaña
- ✓ Storage
- ✓ Aparcamiento
- ✓ Armarios empotrados
- ✓ Vistas al mar
- ✓ Jardín
- ✓ Chimenea
- ✓ Balcón



Property with exceptional privacy and tranquility, offering magnificent sea and mountain views.

The estate includes a main villa and three adjoining plots. Located just 3 km from the center of Begur, 2 km from essential services, and 5 km from Aiguablava beach.

The house is in excellent condition and features spacious interiors distributed over two levels:

On the main floor, you'll find an entrance hall, a large living-dining room with a fireplace and access to the terrace, a spacious fully equipped kitchen, one en-suite bedroom with dressing room, bathroom with shower and access to the terrace, two double bedrooms, and a bathroom with shower.

The lower level includes a second living area with access to a patio, a laundry room, one en-suite bedroom with direct patio access, another double bedroom, a bathroom with shower, and a third double bedroom with an en-suite bathroom and access to the garden.

Outside, next to the pool, there is a summer dining area with a barbecue and a fully equipped outdoor kitchen. The property also boasts a large garden, two closed garages, and outdoor parking space.

Additional features include oil-fired central heating, a 9m x 5m swimming pool, and a valid tourist license.

Built area: 469 m<sup>2</sup>

Plot size: 5,340 m<sup>2</sup>

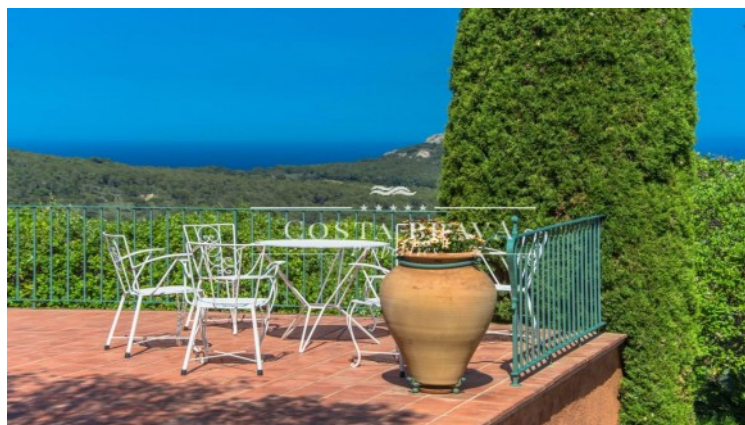
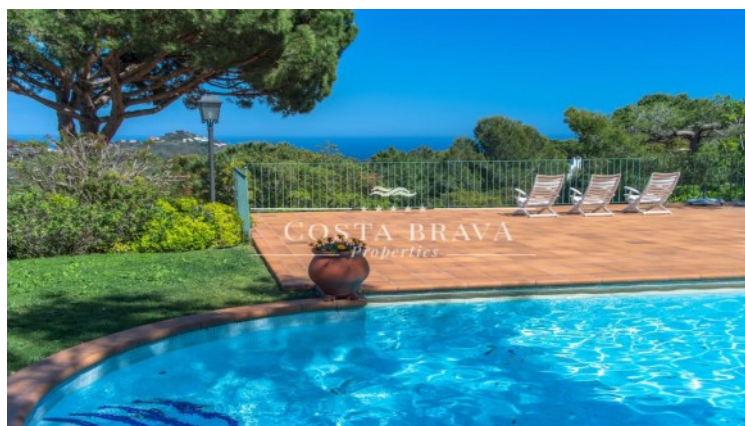
Garage: 37 m<sup>2</sup>

Year built: 1987

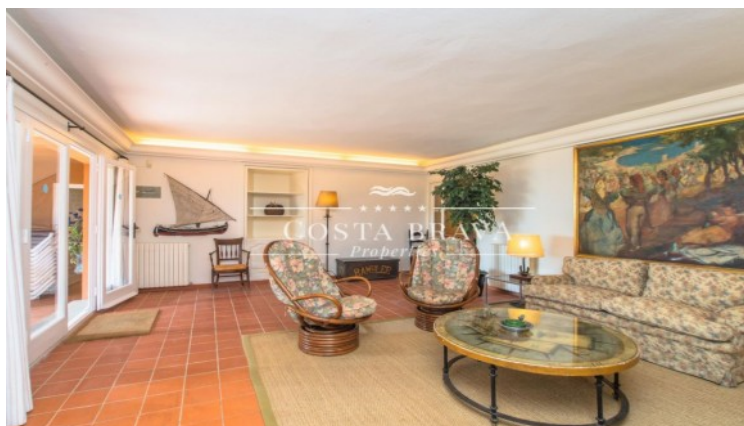
...















Contáctenos para mas información o para concertar una visita

Tel: +34 636 979 378 / [info@propertiescostabrava.com](mailto:info@propertiescostabrava.com)  
+34 625 380 718

<https://www.propertiescostabrava.com>